



天津友发集团
YOUFA STEEL PIPE GROUP



Galvanized Square and Rectangular Steel Pipe

China Top 500
Enterprises Industry
Leading Brands

天津友圣发 国际贸易有限公司

Tianjin Youfa International Trade Co.,Ltd

Profile of the Group

Tianjin Youfa Steel Pipe Group Co., Ltd. was established on July 1, 2000, and its headquarters is located in Tianjin Daquzhuang Town, the largest steel pipe production base in China. The company is a large scale steel pipe manufacturing enterprise integrating the production of various pipe products such as ERW steel pipe, spiral welded pipe, hot-dip galvanized steel pipe, plastic lining composite pipe, plastic coated steel pipe, square and rectangular steel pipe, hot-dip galvanized square and rectangular steel pipe, stainless Steel Pipe, pipe fitting and scaffolding, etc. Output is over 10 million tons every year.

In addition to its headquarters in Tianjin, the company currently has a number of subsidiaries in Tangshan, Handan, Shaanxi, Liyang and other cities, with more than 9000 employees, 293 production lines of steel pipe and scaffolding, 3 national accreditation laboratories and 2 Tianjin accreditation enterprise technology centers. In 2022, the annual sales of Youfa steel pipes will be nearly 20 million tons. By the end of 2017, the whole group had 88 utility model patents and 4 invention patents. There are 32 patents in the process of application and acceptance. Since 2010, Youfa's steel pipe production and sales have increased by more than one million tons annually for 12 consecutive years.

The "Youfa" was recognized as a well known trademark in China by the Trademark Office of the State Administration for Industry and Commerce in March 2008. Youfa Group products have been awarded the title of "Tianjin Famous-brand Products" by the Tianjin Municipal Government for many consecutive years. The steel pipes of "Youfa" brand and "Zhengjinyuan" brand won the Gold Cup Award, the highest award in China's metallurgical industry. Until 2022, Tianjin Youfa Steel Pipe Group has been among the top 500 Chinese enterprises, the top 500 Chinese manufacturing enterprises and the top 500 Chinese private enterprises for 17 consecutive years, and has maintained its leading position in the industry in terms of national production and sales volume for 17 consecutive years.

"Youfa" brand steel pipes sell well all over the country and are widely used in key national projects such as Three Gorges Project, Capital International Airport, Shanghai Pudong International Airport, the 2008 Olympic Games venues, and 2010 Shanghai World Expo exhibition hall. They are exported to 100 countries and regions in European Union, North America, South America, Africa, South-east Asia, and the Middle East. They are recognized by the industry as the first brand in the industry, with a domestic comprehensive market share of more than 30%.



Tianjin Youfa Steel Pipe Factory

Production Base	Factory Name	Products Name	Production Lines
Tianjin Production Base	Tianjin Youfa Steel Pipe Group Co.,Ltd.-No.1 Branch Company;	Hot Dipped Galvanized Steel Pipe	16
		ERW Steel Pipe	9
	Tianjin Youfa Steel Pipe Group Co.,Ltd.-No.2 Branch Company;	ERW Steel Pipe	7
		Square/Rectangular Steel Pipe	15
	Tianjin Youfa Dezhong Steel Pipe Co.,Ltd;	Galvanized Square/Rectangular steel Pipe	6
		SSAW Steel Pipe	5
	Tianjin Youfa Pipeline Technology Co.,Ltd;	Steel Pipe of Lining Plastic	10
		Plastic Coated Steel Pipe	3
	Tianjin Youfa Ruida Traffic Facilities Co.,Ltd	Highway Materials	9
	Tianjin Youfa Stainless Steel Pipe Co., Ltd;	Stainless Steel Pipe	10
		Stainless Steel Pipe Fitting	5
		Tewoo & Youfa Industry Development Co., Ltd. Tianjin Youfa Steel Pipe Group Sales Co., Ltd. Tianjin Youfa International Trade Co., Ltd. Tianjin Youfa Hongtuo Steel Pipe Manufacture Co., Ltd. Tianjin Xindesheng Investment Co., Ltd. Tianjin Tuanbo Yifanfengshun Hotel Co., Ltd. Tianjin Youfa Advertising Co., Ltd. Tianjin Jinghai Daqiuzhuang Yaoshun Hospital	
Tangshan Production Base	Tangshan Zhengyuan Pipeline Industry Co., Ltd.;	Hot Dipped Galvanized Steel Pipe	12
		ERW Steel Pipe	17
		Steel Pipe of Lining Plastic	4
	Tangshan Youfa Steel Pipe Manufacture Co.,Ltd;	ERW Steel Pipe	11
		ERW Steel Pipe	11
	Tangshan Youfa New Construction Equipment Co.,Ltd	Galvanize	12
		Ringlock Scaffolding System	9
Handan Production Base	Handan Youfa Steel Pipe Co.,Ltd;	Hot Dipped Galvanized Steel Pipe	8
		ERW Steel Pipe	12
		Square/Rectangular Steel Pipe	13
		Galvanized Square/Rectangular Steel Pipe	4
		SSAw Steel Pipe	4
		Steel Pipe of Lining Plastic	4
Shaanxi Production Base	Shaanxi Youfa Steel Pipe Co.,Ltd;	Hot Dipped Galvanized Steel Pipe	6
		ERW Steel Pipe	12
		Square/Rectangular Steel Pipe	6
		Galvanized Square/Rectangular Steel Pipe	3
		Steel Pipe of Lining Plastic	3
		Plastic Coated Steel Pipe	3
Liyang Production Base	Jiangsu Youfa Steel Pipe Co.,Ltd;	Hot Dipped Galvanized Steel Pipe	6
		ERW Steel Pipe	10
		Square/Rectangular Steel Pipe	9
		Galvanized Square/Rectangular Steel Pipe	4
Huludao Production Base	Huludao City Steel Pipe Industrial Co.,Ltd;	Welded Steel Oil Pipe	15
	Chengdu Yunganglian Logistics Co.,Ltd;	Logistics Centre	
Total			293



TIANJIN YOUFA PRODUCTION BASE



TANGSHAN YOUFA PRODUCTION BASE



HANDAN YOUFA PRODUCTION BASE



SHAANXI YOUFA PRODUCTION BASE



LIYANG YOUFA PRODUCTION BASE



HULUDAO YOUFA PRODUCTION BASE

Projects at Home and Abroad



Beijing Daxing International Airport



Olympic Stadium Bird's Nest



Tiananmen Auditorium



Beijing Capital International Airport



Shanghai Pudong International Airport



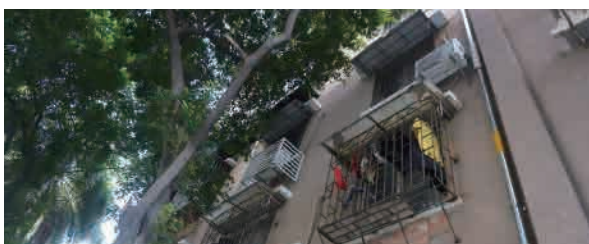
Beijing-Zhangjiakou Winter Olympics Venues



Adama Industrial Parks



Cong ty TNHH Gain Lucky Textile Factory

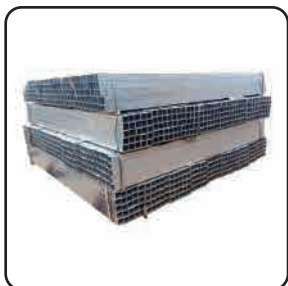


Bolivia Civil Gas Pipeline



Chevron Corporation Oil Platform

Square and Rectangular Steel Pipe



Square pipe: 20*20mm to 400*400mm

Rectangular pipe: 20*40mm to 300*500mm

Thickness: 1.2mm to 30.0mm

Length: usually 5.8m or 6m or 12m, or cutted as required 2m to 12m

Zinc coated: usually 200g/m² (30um) or as required 200 to 500g/m² (30 to 70um)

Standard: ASTM A500, EN10219, EN10210, JIS3466, GB/T 6728

Application: Construction / building materials steel pipe, Steel structure, Fence post steel pipe.

Square and Rectangular Steel Pipe

Manufacturer

Handan Youfa Steel Pipe Co, Ltd

Tianjin Youfa Dezhong Steel Pipe Co.,Ltd

Tangshan Youfa New Construction Equipment Co.,Ltd

Shaanxi Youfa Steel Pipe Co., Ltd

Jiangsu Youfa Steel Pipe Co.,Ltd



Measuring wall thickness



Diameter test



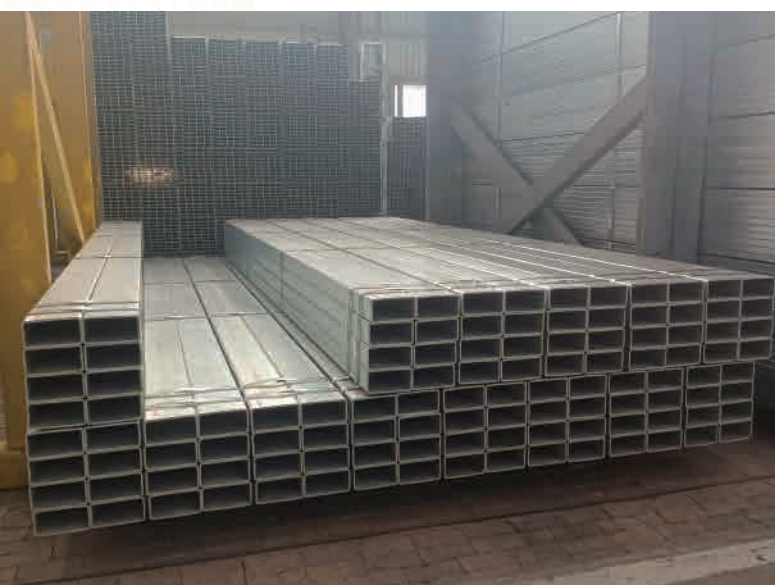
Radius of corners



Transportation



Rectangular Tube Yard



Rectangular Tube

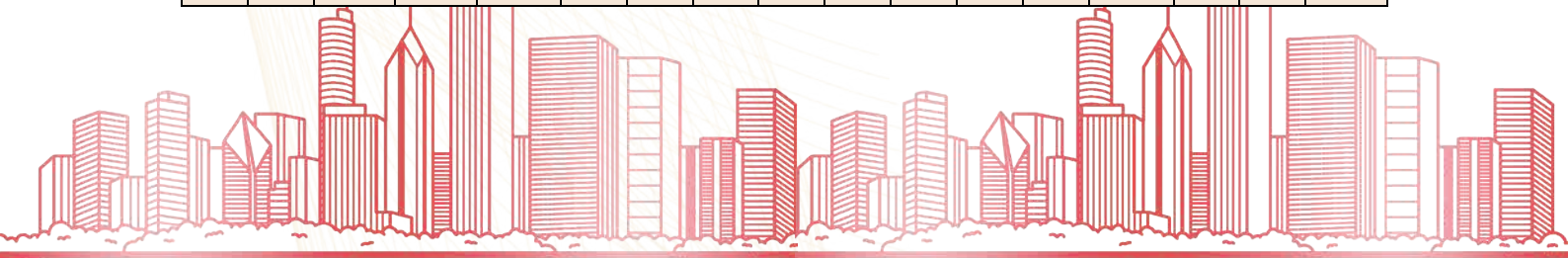


Square Tube



Rectangular Steel Pipe as per EN 10219/2001

Specified Outside Diameter		Specified Thickness	Mass per Unit Length	Cross-Sectional Area	Second Moment of Area		Radius of Gyration		Elastic Section Modulus		Plastic Section Modulus		Torsional Inertia Constant	Super-Ficial Area per Metre Length		Nominal Length per Tonne
B*H		T	M	A	I _{yy}	I _{zz}	I _{yy}	I _{zz}	W _{el_{yy}}	W _{el_{zz}}	W _{ply_y}	W _{ply_z}	L _t	C _t	A _s	m
mm	mm	kg/m	cm ²	cm ⁴	cm ⁴	cm ⁴	cm	cm	cm ³	cm ³	cm ³	cm ³	cm ⁴	cm ³	m ² /m	m
40	20	2	1.68	2.14	4.05	1.34	1.38	0.793	2.02	1.34	2.61	1.6	3.45	2.36	0.113	596
40	20	2.5	2.03	2.59	4.69	1.54	1.35	0.77	2.35	1.54	3.09	1.88	4.06	2.72	0.111	492
40	20	3	2.36	3.01	5.21	1.68	1.32	0.748	2.6	1.68	3.5	2.12	4.57	3.00	0.110	423
50	30	2	2.31	2.94	9.54	4.29	1.8	1.21	3.81	2.86	4.74	3.33	9.77	4.84	0.153	434
50	30	2.5	2.82	3.59	11.3	5.05	1.77	1.19	4.52	3.37	5.7	3.98	11.7	5.72	0.151	355
50	30	3	3.3	4.21	12.8	5.7	1.75	1.16	5.13	3.8	6.57	4.58	13.5	6.49	0.150	303
50	30	4	4.2	5.35	15.3	6.69	1.69	1.12	6.1	4.46	8.05	5.58	16.5	7.71	0.146	238
60	40	2	2.93	3.74	18.4	9.83	2.22	1.62	6.14	4.92	7.47	5.65	20.7	8.12	0.193	341
60	40	2.5	3.6	4.59	22.1	11.7	2.19	1.6	7.36	5.87	9.06	6.84	25.1	9.72	0.191	278
60	40	3	4.25	5.41	25.4	13.4	2.17	1.58	8.46	6.72	10.5	7.94	29.3	11.20	0.190	236
60	40	4	5.45	6.95	31	16.3	2.11	1.53	10.3	8.14	13.2	9.89	36.7	13.70	0.186	183
60	40	5	6.56	8.36	35.3	18.4	2.06	1.48	11.8	9.21	15.4	11.5	42.8	15.60	0.183	152
70	50	2	3.56	4.54	31.5	18.8	2.63	2.03	8.99	7.5	10.8	8.58	37.5	12.20	0.233	281
70	50	2.5	4.39	5.59	38	22.6	2.61	2.01	10.9	9.04	13.2	10.4	45.8	14.70	0.231	228
70	50	3	5.19	6.61	44.1	26.1	2.58	1.99	12.6	10.4	15.4	12.2	53.6	17.10	0.230	193
70	50	4	6.71	8.55	54.7	32.2	2.53	1.94	15.6	12.9	19.5	15.4	68.1	21.20	0.226	149
70	50	5	8.13	10.4	63.5	37.2	2.48	1.9	18.1	14.9	23.1	18.2	80.8	24.60	0.223	123
80	40	2	3.56	4.54	37.4	12.7	2.87	1.67	9.34	6.36	11.6	7.17	30.9	11.00	0.233	281
80	40	2.5	4.39	5.59	45.1	15.3	2.84	1.65	11.3	7.63	14.1	8.72	37.6	13.20	0.231	228
80	40	3	5.19	6.61	52.3	17.6	2.81	1.63	13.1	8.78	16.5	10.2	43.9	15.30	0.230	193
80	40	4	6.71	8.55	64.8	21.5	2.75	1.59	16.2	10.7	20.9	12.8	55.2	18.80	0.226	149
80	40	5	8.13	10.4	75.1	24.6	2.69	1.54	18.8	12.3	24.7	15	65	21.70	0.223	123
80	60	2	4.19	5.34	49.5	31.9	3.05	2.44	12.4	10.6	14.7	12.1	61.2	17.10	0.273	239
80	60	2.5	5.17	6.59	60.1	38.6	3.02	2.42	15	12.9	18	14.8	75.1	20.70	0.271	193
80	60	3	6.13	7.81	70	44.9	3	2.4	17.5	15	21.2	17.4	88.3	24.10	0.270	163
80	60	4	7.97	10.1	87.9	56.1	2.94	2.35	22	18.7	27	22.1	113	30.30	0.266	126
80	60	5	9.7	12.4	103	65.7	2.89	2.31	25.8	21.9	32.2	26.4	136	35.70	0.263	103
90	50	2	4.19	5.34	57.9	23.4	3.29	2.09	12.9	9.35	15.7	10.5	53.4	15.90	0.273	239
90	50	2.5	5.17	6.59	70.3	28.2	3.27	2.07	15.6	11.3	19.3	12.8	65.3	19.20	0.271	193
90	50	3	6.13	7.81	81.9	32.7	3.24	2.05	18.2	13.1	22.6	15	76.7	22.40	0.270	163
90	50	4	7.97	10.1	103	40.7	3.18	2	22.8	16.3	28.8	19.1	97.7	28.00	0.266	126
90	50	5	9.7	12.4	121	47.4	3.12	1.96	26.8	18.9	34.4	22.7	116	32.70	0.263	103
100	40	2.5	5.17	6.59	79.3	18.8	3.47	1.69	15.9	9.39	20.2	10.6	50.5	16.80	0.271	193
100	40	3	6.13	7.81	92.3	21.7	3.44	1.67	18.5	10.8	23.7	12.4	59	19.40	0.270	163
100	40	4	7.97	10.1	116	26.7	3.38	1.62	23.1	13.3	30.3	15.7	74.5	24.00	0.266	126
100	40	5	9.7	12.4	136	30.8	3.31	1.58	27.1	15.4	36.1	18.5	87.9	27.90	0.263	103
100	50	2.5	5.56	7.09	91.2	31.1	3.59	2.09	18.2	12.4	22.7	14	75.4	21.50	0.291	180
100	50	3	6.6	8.41	106	36.1	3.56	2.07	21.3	14.4	26.7	16.4	88.6	25.00	0.290	152
100	50	4	8.59	10.9	134	44.9	3.5	2.03	26.8	18	34.1	20.9	113	31.30	0.286	116
100	50	5	10.5	13.4	158	52.5	3.44	1.98	31.6	21	40.8	25	135	36.80	0.283	95.4
100	50	6	12.3	15.6	179	58.7	3.38	1.94	35.8	23.5	46.9	28.5	154	41.40	0.279	81.5
100	50	6.3	12.5	15.9	176	58.2	3.32	1.91	35.1	23.3	45.9	28.6	158	42.10	0.273	79.9
100	60	2.5	5.96	7.59	103	46.9	3.69	2.49	20.6	15.6	25.1	17.7	103	26.20	0.311	168
100	60	3	7.07	9.01	121	54.6	3.66	2.46	24.1	18.2	29.6	20.8	122	30.60	0.310	141
100	60	4	9.22	11.7	153	68.7	3.6	2.42	30.5	22.9	37.9	26.6	156	38.70	0.306	108
100	60	5	11.3	14.4	181	80.8	3.55	2.37	36.2	26.9	45.6	31.9	188	45.80	0.303	88.7
100	60	6	13.2	16.8	205	91.2	3.49	2.33	41.1	30.4	52.5	36.6	216	51.90	0.299	75.7
100	60	6.3	13.5	17.2	203	90.9	3.44	2.3	40.7	30.3	52.8	36.9	223	53.00	0.293	74
100	80	2.5	6.74	8.59	127	90.2	3.84	3.24	25.4	22.5	30	25.8	166	35.70	0.351	148
100	80	3	8.01	10.2	149	106	3.82	3.22	29.8	26.4	35.4	30.4	196	41.90	0.350	125
100	80	4	10.5	13.3	189	134	3.77	3.17	37.9	33.5	45.6	39.2	254	53.40	0.346	95.4
100	80	5	12.8	16.4	226	160	3.72	3.12	45.2	39.9	55.1	47.2	308	63.7	0.343	77.9
100	80	6	15.1	19.2	258	182	3.67	3.08	51.7	45.5	63.8	54.7	357	73.00	0.339	66.2
100	80	6.3	15.5	19.7	259	183	3.62	3.04	51.8	45.7	64.6	55.4	371	75.00	0.333	64.6



Rectangular Steel Pipe as per EN 10219/2001

Specified Outside Diameter		Specified Thickness	Mass per Unit Length	Cross-Sectional Area	Second Moment of Area		Radius of Gyration		Elastic Section Modulus		Plastic Section Modulus		Torsional Inertia Constant	Superficial Area per Metre Length		Nominal Length per Tonne
B*H		T	M	A	I _{yy}	I _{zz}	I _{yy}	I _{zz}	W _{el_{yy}}	W _{el_{zz}}	W _{pl_{yy}}	W _{pl_{zz}}	L _t	C _t	A _s	m
mm	mm	kg/m	cm ²	cm ⁴	cm ⁴	cm ⁴	cm	cm	cm ³	cm ³	cm ³	cm ³	cm ⁴	cm ³	m ² /m	m
250	150	5	30.1	38.4	3304	1508	9.28	6.27	264	201	320	225	3285	337.00	0.783	33.2
250	150	6	35.8	45.6	3886	1768	9.23	6.23	311	236	378	266	3886	396.00	0.779	27.9
250	150	6.3	37.2	47.4	4001	1825	9.18	6.2	320	243	391	276	4078	412.00	0.773	26.8
250	150	8	46.5	59.2	4886	2219	9.08	6.12	391	296	482	340	5050	504.00	0.766	21.5
250	150	10	57	72.6	5825	2634	8.96	6.02	466	351	582	409	6121	602.00	0.757	17.6
250	150	12	66	84.1	6458	2925	8.77	5.9	517	390	658	463	7088	684.00	0.738	15.2
250	150	12.5	68.3	87	6633	3002	8.73	5.87	531	400	678	477	7315	704.00	0.736	14.6
250	150	16	83.8	106.8	7660	3453	8.47	5.69	613	460	805	566	8713	823.00	0.718	11.9
260	180	5	33.2	42.4	4121	2350	9.86	7.45	317	261	377	294	4695	426.00	0.863	30.1
260	180	6.3	41.2	52.5	5013	2856	9.77	7.38	386	317	463	361	5844	523.00	0.853	24.3
260	180	8	51.5	65.6	6145	3493	9.68	7.29	473	388	573	446	7267	642.00	0.846	19.4
260	180	10	63.2	80.6	7363	4174	9.56	7.2	566	464	694	540	8850	772.00	0.837	15.8
260	180	12	73.5	93.7	8245	4679	9.38	7.07	634	520	790	615	10330	884.00	0.818	13.6
260	180	12.5	76.2	97	8482	4812	9.35	7.04	652	535	815	635	10680	911.00	0.816	13.1
260	180	16	93.9	120	9923	5614	9.11	6.85	763	624	977	759	12890	1079.00	0.798	10.7
300	100	6	35.8	45.6	4777	842	10.2	4.3	318	168	411	188	2403	306.00	0.779	27.9
300	100	6.3	37.2	47.4	4907	868	10.2	4.28	327	174	425	194	2515	318.00	0.773	26.8
300	100	8	46.5	59.2	5978	1045	10	4.2	399	209	523	238	3080	385.00	0.766	21.5
300	100	10	57	72.6	7016	1224	9.9	4.11	474	245	631	285	3681	455.00	0.757	17.6
300	100	12	66	84.1	7808	1343	9.64	4	521	269	710	321	4177	508.00	0.738	15.2
300	100	12.5	68.3	87	8010	1374	9.59	3.97	534	275	732	330	4292	521.00	0.736	14.6
300	100	16	83.8	107	9157	1543	9.26	3.8	610	309	865	386	4939	592.00	0.718	11.9
300	150	6	40.5	51.6	6074	2080	10.8	6.35	405	277	500	309	4988	479.00	0.879	24.7
300	150	6.3	42.2	53.7	6266	2150	10.8	6.32	418	287	517	321	5234	499.00	0.873	23.7
300	150	8	52.8	67.2	7684	2623	10.7	6.25	512	350	640	396	6491	612.00	0.866	18.9
300	150	10	64.8	82.6	9209	3125	10.6	6.15	614	417	776	479	7879	733.00	0.857	15.4
300	150	12	75.4	96.1	10300	3498	10.4	6.03	687	466	883	546	9153	837.00	0.838	13.3
300	150	12.5	78.1	99.5	10590	3595	10.3	6.01	706	479	912	563	9452	862.00	0.836	12.8
300	150	16	96.4	123	12390	4174	10	5.83	826	557	1092	673	11330	1015.00	0.818	10.4
300	200	6	45.2	57.6	7370	3962	11.3	8.29	491	396	588	446	8115	651.00	0.979	22.1
300	200	6.3	47.1	60	7624	4104	11.3	8.27	508	410	610	463	8524	680.00	0.973	21.2
300	200	8	59.1	75.2	9389	5042	11.2	8.19	626	504	757	574	10630	838.00	0.966	16.9
300	200	10	72.7	92.6	11310	6058	11.1	8.09	754	606	921	698	12990	1012.00	0.957	13.8
300	200	12	84.8	108	12790	6854	10.9	7.96	853	685	1056	801	15240	1167.00	0.938	11.8
300	200	12.5	88	112	13180	7060	10.8	7.94	879	706	1091	828	15770	1204.00	0.936	11.4
300	200	16	109	139	15620	8340	10.6	7.75	1041	834	1319	1000	19220	1442.00	0.918	9.18
350	250	6	54.7	69.6	12460	7458	13.4	10.3	712	597	843	671	14550	967.00	1.180	18.3
350	250	6.3	57	72.6	12920	7744	13.3	10.3	738	620	876	698	15290	1010.00	1.170	17.5
350	250	8	71.6	91.2	16000	9573	13.2	10.2	914	766	1092	869	19140	1253.00	1.170	14
350	250	10	88.4	113	19410	11590	13.1	10.1	1109	927	1335	1062	23500	1522.00	1.160	11.3
350	250	12	104	132	22200	13260	13	10	1268	1061	1544	1229	27750	1770.00	1.140	9.65
350	250	12.5	108	137	22920	13690	12.9	9.99	1310	1095	1598	1272	28770	1830.00	1.140	9.3
350	250	16	134	171	27580	16430	12.7	9.81	1576	1315	1954	1554	35500	2220.00	1.120	7.46
400	200	8	71.6	91.2	18970	6517	14.4	8.45	949	652	1173	728	15820	1133.00	1.170	14
400	200	12.5	108	137	27100	9260	14.1	8.22	1355	926	1714	1062	23600	1644.00	1.140	9.3
400	200	16	134	171	32550	11060	13.8	8.05	1627	1106	2093	1294	28930	1984.00	1.120	7.46
400	300	8	84.2	107	25120	16210	15.3	12.3	1256	1081	1487	1224	31180	1747.00	1.370	11.9
400	300	10	104	133	30610	19730	15.2	12.2	1530	1315	1824	1501	38410	2132.00	1.360	9.61
400	300	12	123	156	35280	22750	15	12.1	1764	1516	2122	1747	45530	2492.00	1.340	8.16
400	300	12.5	127	162	36490	23520	15	12	1824	1568	2198	1810	47240	2580.00	1.340	7.86
400	300	16	159	203	44350	28540	14.8	11.9	2218	1902	2708	2228	58730	3159.00	1.320	6.28



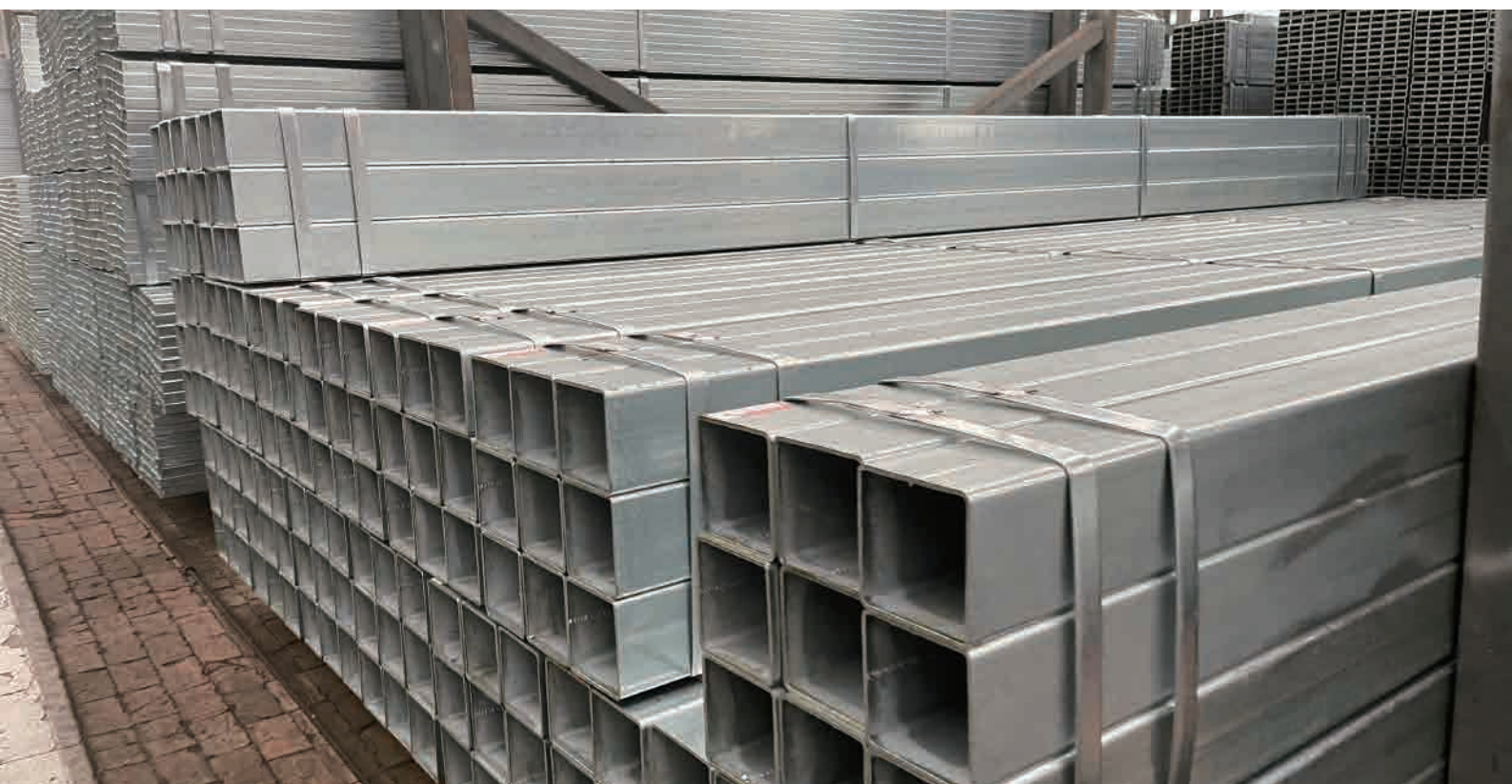
ASTM A500 GR.A/B/C Cold Formed Hollow Section

Square Pipes		Rectangular Pipes	
Size(mm)	Thickness(mm)	Size(mm)	Thickness(mm)
10 x 10	0.6 - 1.0	20 x 10	0.6 - 1.0
12 x 12	0.6 - 1.0	25 x 12	0.6 - 1.0
16 x 16	0.6 - 1.2	38 x 19	0.6 - 1.5
19 x 19	0.6 - 1.5	50 x 25	0.6 - 1.5
20 x 20	0.6 - 1.5	50 x 30	1.0 - 3.0
25 x 25	1.0 - 2.75	60 x 40	1.5 - 3.5
30 x 30	1.0 - 2.75	75 x 50	1.5 - 4.0
32 x 32	1.0 - 3.0	80 x 40	1.5 - 4.0
38 x 38	1.0 - 3.0	100 x 50	2.0 - 6.0
40 x 40	1.0 - 3.5	100 x 60	2.0 - 6.0
50 x 50	1.0 - 5.0	100 x 75	2.0 - 6.0
60 x 60	1.0 - 6.0	120 x 60	3.0 - 6.0
63.5 x 63.5	1.0 - 6.0	120 x 80	3.0 - 6.0
70 x 70	1.5 - 6.0	125 x 50	3.0 - 6.0
75 x 75	1.5 - 6.0	125 x 75	3.0 - 6.0
80 x 80	2.0 - 6.0	150 x 50	3.0 - 6.0
90 x 90	2.0 - 6.0	150 x 75	3.0 - 6.0
100 x 100	2.3 - 6.0	150 x 100	4.0 - 12
120 x 120	4.0 - 6.0	160 x 80	4.0 - 6.0
125 x 125	4.0 - 6.0	175 x 100	4.0 - 12
150 x 150	4.0 - 8.0	200 x 100	4.0 - 12
200 x 200	6.0 - 12	200 x 150	4.0 - 12
250 x 250	6.0 - 12	250 x 150	5.0 - 12
300 x 300	6.0 - 12	300 x 200	5.0 - 12
350x350	6.0 - 12	350x250	5.0 - 12
400 x 400	6.0 - 12	400 x 200	5.0 - 12
500x500	6.0 - 16	500x300	5.0-16





天津友发集团
YOUFA STEEL PIPE GROUP



**23 YEARS EXPERIENCE IN MANUFACTURING
STEEL PRODUCTS SINCE 2000**

ADD: Floor 7.NO 4 Anshun Building, Dafeng Road(Aqua city).
Hongqiao Distr ., Tianjin City, China 300120

www.youfasteelpipe.com / www.chinayoufa.com

